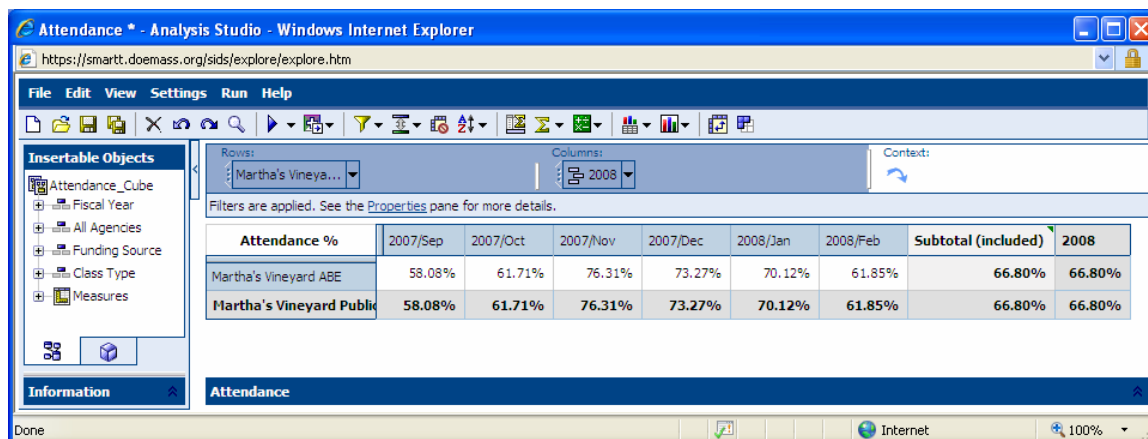


How To Create a Chart

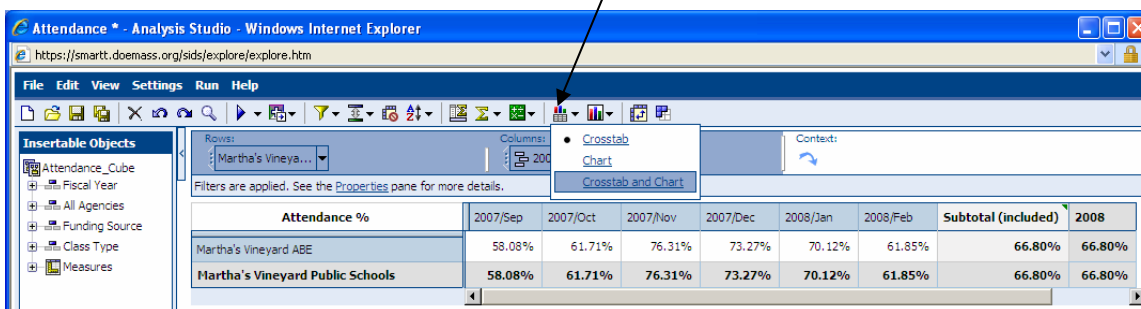
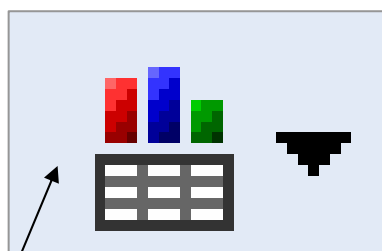
This example starts with the Report created in *How to Create an Attendance Report from the Attendance Cube*.

Start with a table, also known as a 'crosstab table', that is ready to be *chartified*.

For Example,



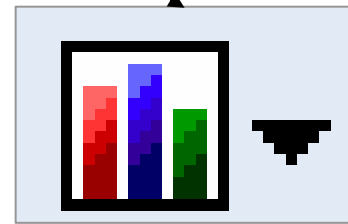
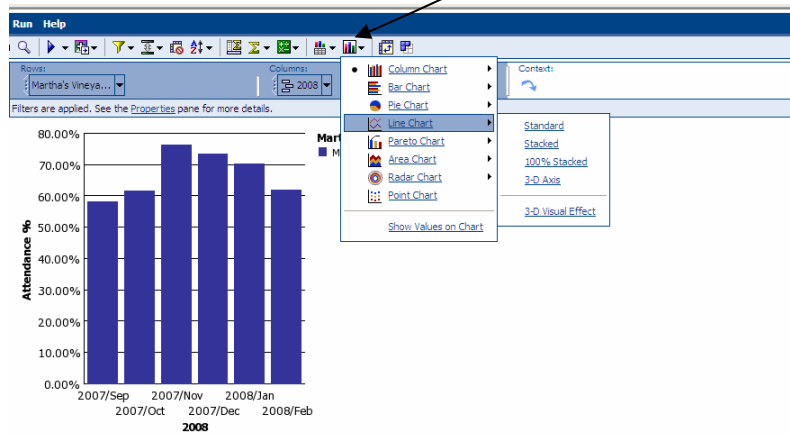
1. Click on the Display button.



For this example, **select 'Crosstab and Chart.'** This allows you to see the chart and the table simultaneously. Selecting Crosstab, the default, just shows the table. Selecting Chart just shows, yes, the chart.

A default Bar Chart should be displayed.

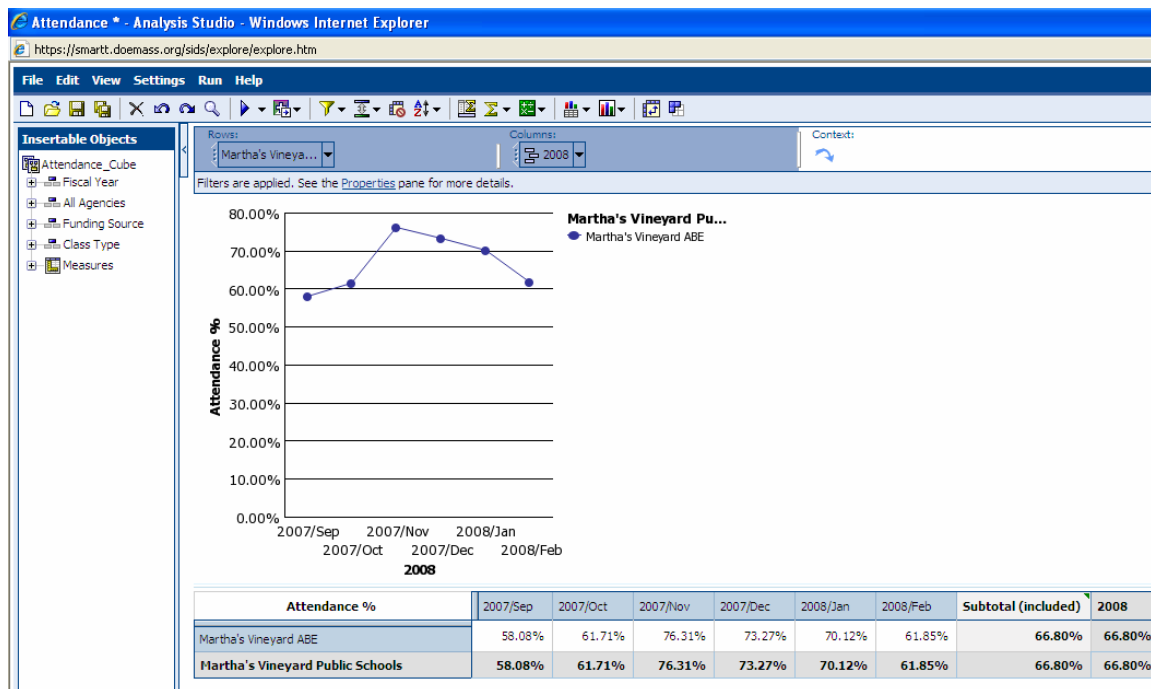
2. To change the type of chart, click on the Chart Button.



Attendance %	2007/Sep	2007/Oct	2007/Nov	2007/Dec	2008/Jan	2008/Feb	Subtotal (included)	2008
Martha's Vineyard ABE	58.08%	61.71%	76.31%	73.27%	70.12%	61.85%	66.80%	66.80%
Martha's Vineyard Public Schools	58.08%	61.71%	76.31%	73.27%	70.12%	61.85%	66.80%	66.80%

This data, for example, may be better displayed with a line.

Click Line Chart and Standard.



The drop-down menu of charts shows many other types of charts. Choose the one that makes the most sense for your data.