

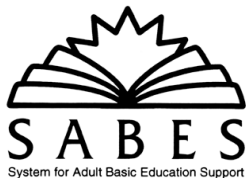
## HR training

SABES is offering a 15-hour seminar that will provide program directors with a solid grasp of all aspects of human resource functions specific to ABE programs.

Participants will examine existing and new policies, analyze HR issues, gain practical skills, and develop action plans they can implement immediately in their programs

In each 5-hour session, PHR-certified Martha Shea will share her expertise in organizational psychology with HR novices and veteran directors.

For more information, see flyer sent via the SABES listserv on March 27, 2008.



This project is funded by a grant from the Massachusetts Department of Education and is supported by Holyoke Community College.

## A journal of our own

—Contributed by Tziva Gover

Eight years ago this month I came to The Care Center, a GED program for young mothers, to teach poetry. I had just completed an MFA program in creative writing at Columbia University in New York City, where I had been spoiled by the abundance of poetic riches all around me.

Nonetheless, there was something about the poems students were writing at The Care Center that excited me in a way no other poetry had. I found myself reading my students' poems over the phone to friends, accosting other teachers in the hall, poem in hand, and insisting they listen to one or another composition.

The next step was obvious. I asked the students to hand in their best poems and I typed them up, brought them to the local copy shop, and had them Xeroxed and stapled together into booklets.

At first I suspected I might just be smitten in the way a mother is, exclaiming over every mundane accomplishment of her child. But when I showed the first few staple-bound volumes to Anne Teschner, director of The Care Center, I found that she shared my enthusiasm and my assessment of those poems.

Anne gave me free rein to explore and expand on the potential of our Care Center literary journal, which has come to be called *Nautilus II*.

At first I thought of the poetry journal as *my* project; *my* way to show off *my* students' work. Notice all those "my"s in there. But luckily, at about the time *Nautilus II* was taking off, my daughter was on the editorial board of Holyoke High School's newspaper. When I asked her for advice on how to publish "my" journal, she stopped me cold. "Mom, you have to let the students do it," she said. "You have to let them pick the poems and make the decisions."

(*Journal of Our Own*) (Continued on page 2)

## What's inside

Student leadership event in WMass.....	2
College for A Day—p.m. edition .....	3
Student demographics via COGNOS .....	4-5
Tech tips .....	6
3-month calendar of events .....	7

## A journal of our own

(Continued from page 1)

Until then, the anthologies of student poetry I had created for the school had been like my gifts to the students. But from now on, *Nautilus II*, would be the students' own journal.

So now, each year I invite students to apply to be on the board of our literary journal. I choose 10-12 students, based on their applications, attendance, teacher recommendations, etc.

Each year the group is different, but some of our routines are the same. We meet once or twice a week during afternoon elective classes. At our first two meetings the students are handed a "blank" contract. Together we decide what the rules will be for conduct on the editorial board. Then we talk about poetry, what we like and why we like it. Based on those discussions, we create a rubric for choosing the poems for that year's journal.

We've also developed a positive relationship with a professional designer, who meets with the group to review basic design principles and to discuss how this year's journal will look, what would make the best cover, etc.

Two years ago the editors wanted to know how we could get bookstores to carry our journal, so we met with the Community Relations Manager at Barnes & Noble Holyoke. We learned about ISBN numbers, ISSN numbers, why "blurbs" or endorsements are so important, and why bookstores only carry books with spines. As a result, we made a few changes to our journal. Last year *Nautilus II* carried endorsements from nationally known poets including Martín Espada, Naomi Shihab Nye, Nikky Finney, Bessy Reyna and others. We also have an ISSN number (like the ISBN number you see on books, but this one is specifically for journals and periodicals) so our journal is now registered with the Library of Congress.

Thanks to successful fundraising on the part of The Care Center, we are able to pay our editors a stipend for their efforts. This helps them see that their work is valuable and valued.

Now I can say that I am very proud of "our" journal. The fact that it truly does belong to the students has made it a source of great pride at The Care Center. The fact that the students take their jobs as editors so seriously and put their talent and creativity into the project means that *Nautilus II* is purchased and enjoyed by hundreds of people each year.

I have so much more to say, but it's time to roll up my sleeves and get back to work. Later this week the sixth *Nautilus II* editorial board will be chosen, which means I have a pile of applications to read through. And then the fun begins!

---

TZIVIA GOVER, Writing Specialist at The Care Center, is the author of [Mindful Moments](#) for [Stressful Days](#). She teaches workshops about teaching poetry to nontraditional students. Visit [www.tziviagover.com](http://www.tziviagover.com) for more information.

---

## Student leadership event in WMass.

The annual statewide student leadership celebration will take place in Western Massachusetts this year! The event highlights student leaders from across the state. This year, it will be held on Friday, May 16, 2008 in the Kittredge Center at Holyoke Community College. The event is sponsored by Mass AAL (the statewide student leadership event) and SABES (with the SABES Central Resource Center in Boston). More information will be posted on our listserv.

We are looking forward to having this event take place in Holyoke this year!

## College for a Day moves to the evening!

On March 18, 2008, SABES and Holyoke Community College held College for a Day for the sixth time. This year, based on suggestions from teachers, we held it in the evening. The format was shortened, since we had less time, but the feedback was still positive! Students were treated to light refreshments and then opening remarks by SABES staff, the president of HCC, Bill Messner, and the keynote speaker, Jackie Lozada. (Please see biographical information on Jackie, below.). After the opening, they attended classes taught by HCC faculty including: *Merchants of Cool*, *The Art of Cookie Baking*, *Blood, Guts and All That Stuff*, *Nursing and Be Your Own Band*. We were amazed at the large turnout; the numbers of those registered and those who showed up was higher than any other College for a Day.

We will be contacting some of the teachers who attended in the next few weeks in order to get feedback to help us plan next year's College for a Day. If you did not attend, but have students who did and would like to pass along any feedback you heard, please let us know. You can contact either Dori at [dmccor-mack@hcc.mass.edu](mailto:dmccor-mack@hcc.mass.edu) or Michele at [msedor@hcc.mass.edu](mailto:msedor@hcc.mass.edu).

Students and faculty both gave very positive feedback...

*"I had a good week. I went to college and I had the best time. I never thought that I could see myself in college, but that day was special because that day it opened by eyes and I told myself that I am going to work hard to go and get my GED and attend HCC."*

Student from Valley Opportunity Council

*"It was a pleasure to interact with such a motivated group of students."*

John Donnellan, HCC Faculty Member, Merchant of Cool

*"The students in my Be Your Own Band class were enthusiastic, attentive and creative. They all left amazed at how enjoyable the class was and how easy it was to work with digital audio."*

Jay Ducharme, HCC Faculty, Be Your Own Band.

---

## Keynote speaker for College for a Day, 2008—Jackie Lozada

Jackie obtained her GED in 1988 at Holyoke Community College (HCC). She graduated from HCC's Business Administration program in 2000. She was a member of HCC's Women in Transition program that has since changed to the New Directions, New Careers program. In 2004, she graduated from Westfield State College with a B.S. degree in Business Management.

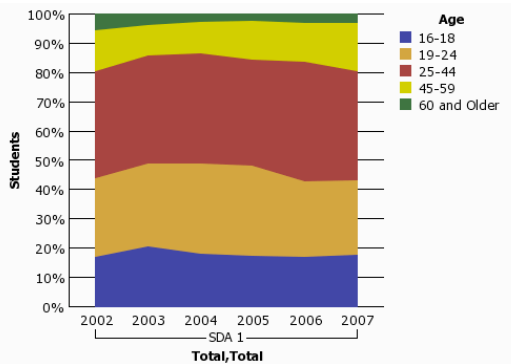
While working on attaining all these education goals, she worked full time and raised two kids.

Jackie has worked in the field of education for over 18 years. This includes seven years with the Holyoke Public Schools, eight years with for Holyoke Community College in the Admissions and Transfer Affairs Office and nearly three years with CareerPoint. She has also been involved in various community and volunteer activities, including adult literacy work with the Holyoke Chamber of Commerce and past Board membership with Girls Incorporated of Holyoke.

Jackie currently works at CareerPoint as a Bilingual Training Specialist and also teaches a pre-GED class in the evenings with HCC's Adult Learning Center. She says that she uses her life and career experiences to motivate and influence the students she works with into pursuing educational goals that will in turn help with their personal goals.

## Student Demographics via Cognos

All that effort inputting data into SMARTT starts to pay off when you play around with Cognos. The charts below show ABE and ESOL demographic data for the Western Massachusetts Region. Data was grouped using School District Areas 1, 3, and 7, which roughly represent Berkshire, Franklin/Hampshire, and Hampden Counties respectively. Here you can see changes in numbers of students whose primary assessment was ABE or ESOL and also changes in age. Contact Charlie for more info.

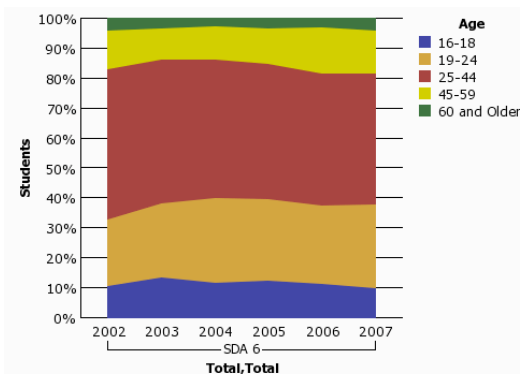


Students	SDA 1						
	2002	2003	2004	2005	2006	2007	Total
16-18	121	145	130	111	119	120	709
19-24	187	197	219	193	179	174	963
25-44	255	258	269	229	285	251	1177
45-59	99	74	78	85	92	113	385
60 and Older	37	25	17	13	19	19	80
<b>Age</b>	<b>699</b>	<b>699</b>	<b>713</b>	<b>631</b>	<b>694</b>	<b>677</b>	<b>3209</b>

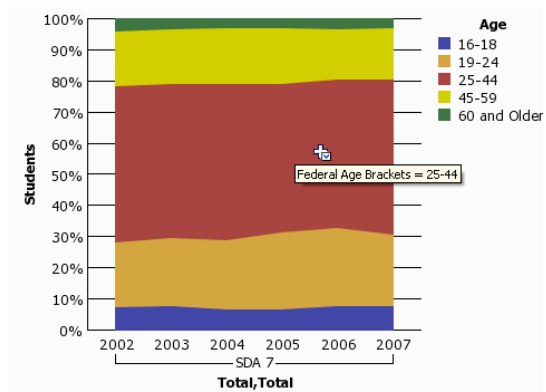
### Age Group Changes for each SDA.

The Charts and tables to the left depict the changes in Age demographic for ABE/ESOL students for each SDA during the fiscal years 2002 through 2007. The charts show percent changes of enrolled students.

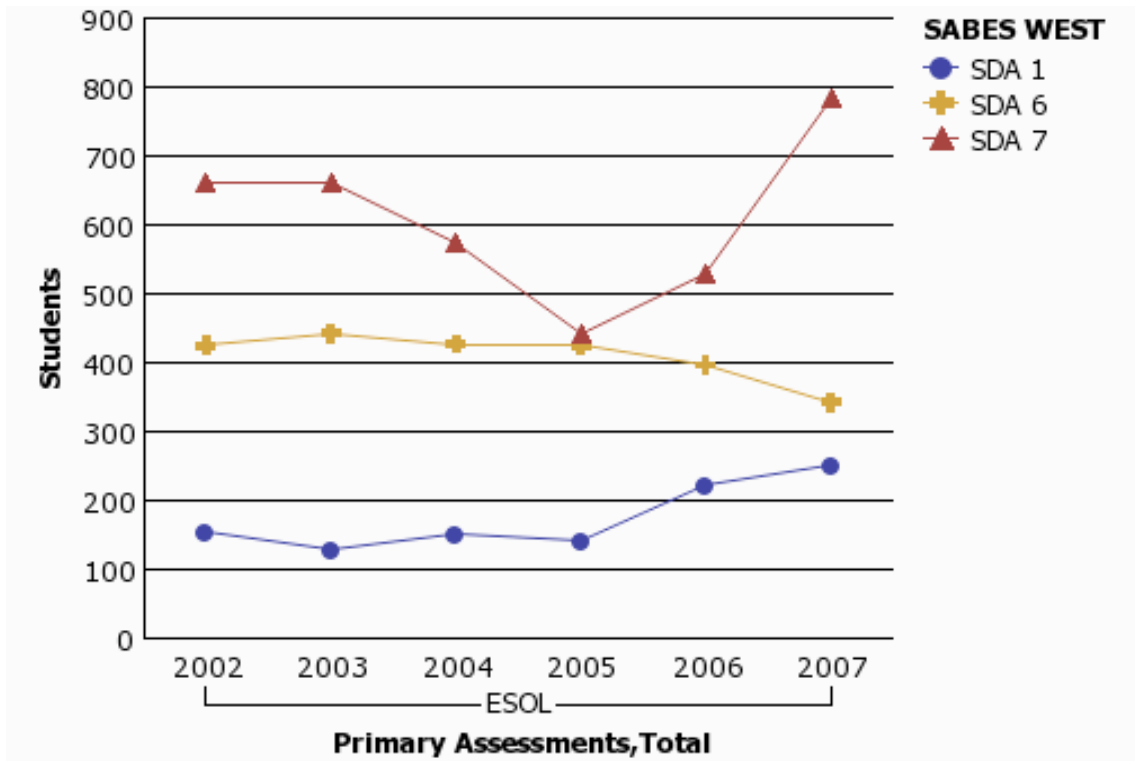
- SDA 1 = Berkshires
- SDA 6 = Hampden County
- SDA 7 = Franklin/Hampshire Counties



Students	SDA 6						
	2002	2003	2004	2005	2006	2007	Total
16-18	96	129	114	124	119	86	602
19-24	200	241	270	273	270	244	1226
25-44	452	462	446	448	453	378	1942
45-59	116	101	105	120	161	125	509
60 and Older	37	31	25	32	28	34	117
<b>Age</b>	<b>901</b>	<b>964</b>	<b>960</b>	<b>997</b>	<b>1031</b>	<b>867</b>	<b>4227</b>



Students	SDA 7						
	2002	2003	2004	2005	2006	2007	Total
16-18	99	104	87	83	111	135	559
19-24	272	286	287	313	364	395	1610
25-44	659	655	646	603	684	860	3117
45-59	226	232	231	224	236	288	944
60 and Older	54	43	38	36	45	49	166
<b>Age</b>	<b>1310</b>	<b>1320</b>	<b>1289</b>	<b>1259</b>	<b>1440</b>	<b>1727</b>	<b>6186</b>



Students	ESOL						
	2002	2003	2004	2005	2006	2007	Total
SDA 1	154	130	152	140	222	252	<b>815</b>
SDA 6	424	443	427	424	396	343	<b>1763</b>
SDA 7	660	660	573	443	529	785	<b>2674</b>
<b>SABES WEST</b>	<b>1238</b>	<b>1233</b>	<b>1152</b>	<b>1007</b>	<b>1147</b>	<b>1380</b>	<b>5252</b>

Figure 2. Change in numbers of students who had an ESOL primary assessment from 2002 to 2007 (2008 data is incomplete). Each line represents a different School District Area (SDA). Roughly, SDA 6 are the Berkshires; SDA 2 are Franklin/Hampshire Counties; and SDA 7 is Hampden County. (Chart and table generated using Cognos).

## Tech tips

- **SABES/West has a Blog** – [sabeswest.blogspot.com](http://sabeswest.blogspot.com) .

This will be used by sabeswest for posting coolstuff on the fly, especially tech related. Recently it was used as a place to put suggestions for web-based GED test prep links. For example:

<http://www.nwlincs.org/NWLINCSEWEB/gedclass.htm> -- The NorthWest Internet Gateway for Adult Education Online Resources. At this site you will find the following Practice Tests at this site:

- ⇒ [GED Pre-Testing](#) -- *Barron's* hosted, can choose modules; links to other practice support materials. Moderately complex interface.
- ⇒ [Test Prep GED Review](#) -- “*test prep review*” – simple web-based database has set of sample questions for each module for self-assessment. Complex to get there.
- ⇒ [GED Practice Test](#) – *Steck-Vaughan*. Easy to get to. Pretty good – can show a “summary” of how you are doing at any point.

- **Moodle.** Most everyone reading this newsletter will in some way be tied to Steve Lindberg’s Literacytent, a tech backbone in the state devoted to adult literacy. If you are on the sabeswest listserve, for example, you are getting emails sent from literacytent (see invite below). One of the services he provides is a web-based application called Moodle, that enables educators to create and deliver distance learning courses. See more at: <http://moodle.literacytent.org>

- **Teacher Training Videos.** Here’s a great resource for online teacher PD:

<http://www.teachertrainingvideos.com/>

You’ll find everything from tips on PowerPoint to using SecondLife to creating blogs.

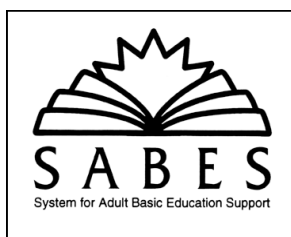
### SABES/West e-mail listserv invite

*If you know of someone in the field interested in being subscribed to the SABES/West e-mail listserv, send me their email, and I’ll sign them up. To reduce spam attacks, I usually do a little vetting of folks who sign up, but if they’re coming from an existing subscriber no vetting is necessary. And just a reminder, whenever you send an e-mail to [sabeswest@lists.literacytent.org](mailto:sabeswest@lists.literacytent.org) it goes out to everyone subscribed to it.*

*Tip: This link gets you access to the sabes/west listserv information: <http://lists.literacytent.org/mailman/listinfo/sabeswest> -- On this page you will find information about the functions of the list, how to access the archives of all past messages, and a way to change your account options (E.G. to go on vacation or to get digests instead of individual emails). This link is included at the bottom of every message posted to the listserv.*

*Please feel free to contact me with any questions at [cherbert@hcc.mass.edu](mailto:cherbert@hcc.mass.edu)*

*Your majordomo,  
Charlie*



### Three-month calendar of events at a glance...

## PROFESSIONAL DEVELOPMENT OPPORTUNITIES

For detailed information on these activities, please look on the SABES statewide calendar website — <http://calendar.sabes.org>.

All activities will be held at Holyoke Community College unless otherwise noted.

All trainings are offered FREE of charge to ABE practitioners. If enrollment is limited, registrations will be accepted on a first-come, first-served basis.

#### **3-Option Registration:**

On-line website: <http://calendar.sabes.org> Telephone: (413) 552-2586 E-mail: [amorris@hcc.mass.edu](mailto:amorris@hcc.mass.edu)

**PRE-REGISTRATION is required** for all SABES' activities. Low registrations result in the cancellation of workshops. Please register at least 1 full week prior to the date of activity.

**CANCELLATION POLICY/INCLEMENT WEATHER:** Call Holyoke Community College's Hotline — (413)-552-2600 x1418 — for information on closings and delays due to inclement weather. The Hotline is accessible 24 hours a day and is updated at 6 a.m. and 4:30 p.m. for each questionable day. In addition, HCC's website — [www.hcc.mass.edu](http://www.hcc.mass.edu) — will post notice of closings and delays. Local radio and television stations also carry closings and delays.

**PARKING** for SABES' events is assigned to A-E & Q Lots, unless otherwise indicated.

### Regional Trainings

#### APRIL

- ☞ Intro to Irlen Syndrome
- ☞ Asperger's Syndrome and Non-Verbal Learning Disabilities
- ☞ ABE Directors Meeting with LWIB Reps
- ☞ Project-based Learning (at VOC)
- ☞ More than Preparing for the GED: Vocabulary, Fluency and Comprehension
- ☞ Worker Rights, Part 1
- ☞ Integrating Assessment into Classroom Practice
- ☞ Learner Persistence (at MCLA)
- ☞ HR Training for Program Directors—Part 1
- ☞ SMARTT Update

#### MAY

- ☞ Worker Rights, Part 2
- ☞ ABE Program Design Update
- ☞ SMARTT Update
- ☞ License Info Session
- ☞ Volunteer Coordinators' Sharing Group
- ☞ ABE Tech Roundtable
- ☞ Intro to ESOL Lesson Planning
- ☞ Excel for Program Administrators
- ☞ Statewide Student Leadership Conference
- ☞ Intro to Counseling
- ☞ Learning Disabilities in the ESOL Classroom
- ☞ From Vanilla to Virtuoso: Teaching Vocabulary in the ESOL Classroom
- ☞ Fabulous! Flyers, Brochures, Newsletters
- ☞ ADARN (ADA Regional Network)
- ☞ HR Training for Program Directors—Part 2
- ☞ Counseling Sharing Group

#### JUNE

- ☞ Statewide volunteer meeting (at QCC)
- ☞ Teaching Workplace Issues in the ESOL Classroom
- ☞ HR Training for Program Directors—Part 3
- ☞ Counseling Sharing Group
- ☞ UMite—Using Metaphorical Illustration in Technology Education

For detailed information on these activities, please look on the SABES statewide calendar website — <http://calendar.sabes.org>.

Interested in staying in touch with training events, job postings, DOE alerts or tidbits of classroom strategies? Sign up for listserv by sending e-mail to [cherbert@hcc.mass.edu](mailto:cherbert@hcc.mass.edu).

**Stay connected!**

General Staff Development — Michele Sedor..... (413) 552-2442  
msedor@hcc.mass.edu

Technology — Charlie Herbert..... (413) 552-2019  
cherbert@hcc.mass.edu

Assessment/Licensure/Curriculum/Workforce Development — Dori McCormack..... (413) 552-2393  
dmccormack.mass.edu

**PROFESSIONAL DEVELOPMENT**

Office Manager — Adrienne Morris..... (413) 552-2586  
amorris@hcc.mass.edu

Regional Director — George Kohout..... (413) 552-2069  
gkohout@hcc.mass.edu

**ADMINISTRATION**

**SABES/West Staff**

**SABES General Message Center — (413) 552-2586**  
**FAX : (413) 552-2067**

# The Pipeline Of WMass.

Holyoke Community College  
303 Homestead Avenue  
Holyoke, MA 01040

[Affix label here]

**Dated material!**  
**Open immediately!**